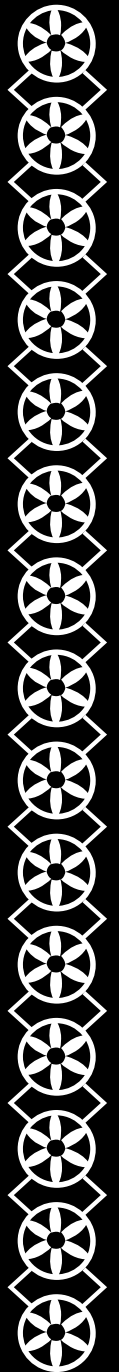
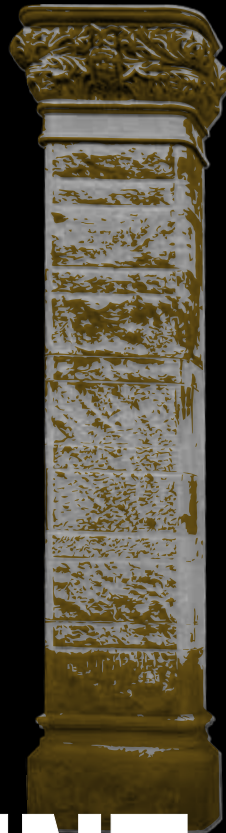
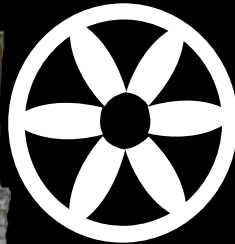




918 F STREET, NW
WASHINGTON, D.C.



EST. 1890

CLIENT KIT



OVERVIEW

BACKGROUND	5
ACCESSIBILITY	6
AMENITIES	7
LAYOUT OF THE SPACE	8
RENTALS BY ROOM	10
PREFERRED PARTNERS	19
PARKING NEARBY	22
HOTELS NEARBY	23



**27,000
RENTABLE
SQ FT**

BACKGROUND

SEVEN STORIES OF HISTORIC ELEGANCE

The National Union Building is a 27,000 square foot venue built in the Romanesque Revival style in 1890. Designed by famous architect Glenn Brown (1854-1932), the building is one of the most important of his DC works. Mr. Brown used it as his office between 1890 and 1905. During that time, the National Union Building was the scene of many meetings that were significant in the planning of the capital. Built of Hummelstown brownstone quarried in Pennsylvania, the structure today ranks as the city's most outstanding example of the commercial "Richardsonian" Romanesque Revival.

**NOW, A VERSATILE
AND BOUNDLESS
VENUE ABLE TO
ACCOMMODATE
YOUR EVERY NEED**

UTILIZE OUR SPACE FOR:

WEDDINGS

REHEARSAL DINNERS

CORPORATE EVENTS

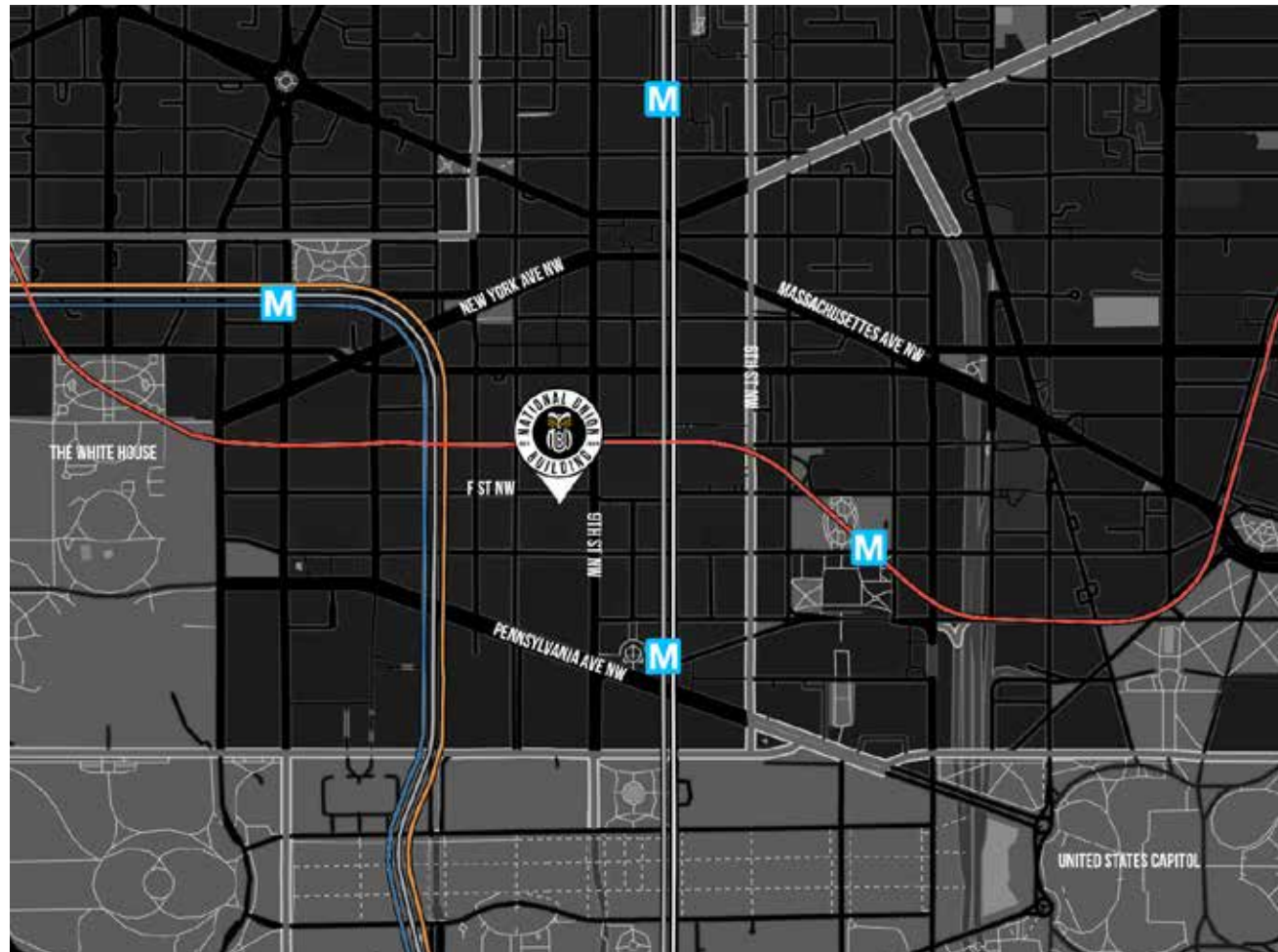
PARTIES

PRODUCT LAUNCHES

SOCIAL EVENTS

COMMUNITY EVENTS





AMENITIES

The National Union Building is in the center of DC, surrounded by some of the best restaurants and hotels in the city. We are located right between Gallery Place and Metro Center Stations, providing easy public transportation access as well as several nearby secured parking garages for your guest's convenience. Inside the building, there are a variety of spaces that are perfect for different types of events. Additionally, while the building is historic and has a distinctive style, the individual spaces can be decorated to fit the personality of each event. Plus, time limits for events are very flexible.

ACCESSIBILITY

Public transportation is encouraged. There are abundant hotel options nearby.

The building itself has elevator access to all 7 floors.



ONE BLOCK FROM GALLERY PLACE METRO (RED AND GREEN LINES)



TWO BLOCKS FROM METRO CENTER (RED, ORANGE, BLUE, AND SILVER LINES)



ON A THROUGHFARE OF ALL MAJOR BUS LINES



MULTIPLE SECURE PARKING GARAGES WITHIN TWO BLOCKS



VALET PARKING AVAILABLE BY CONTRACT

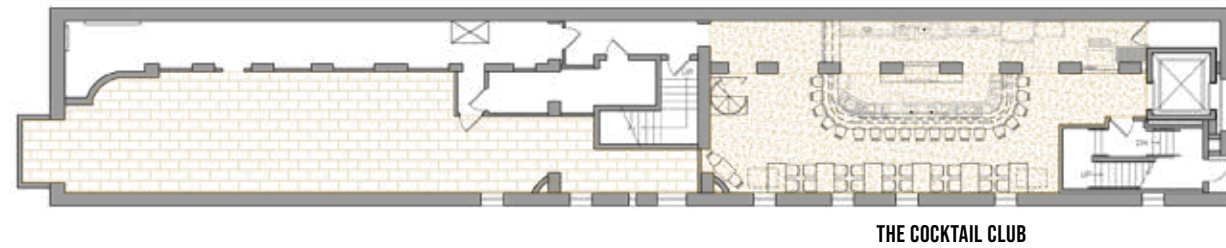


LAYOUT OF THE SPACE

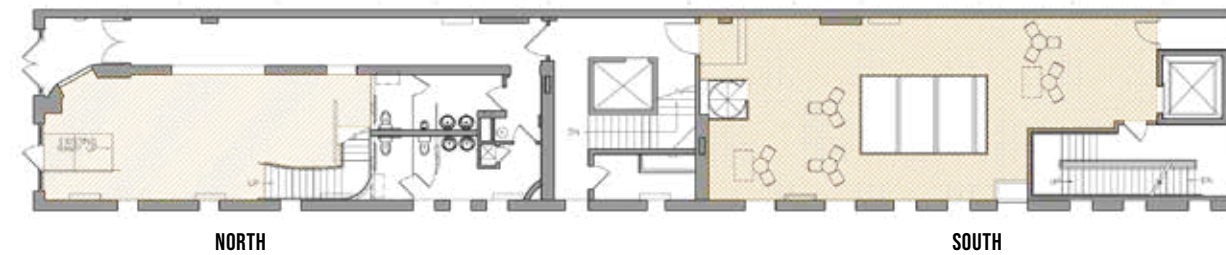
Please note that tables and chairs in diagrams are for demonstration purposes only, all spaces are flexible for your unique setup.



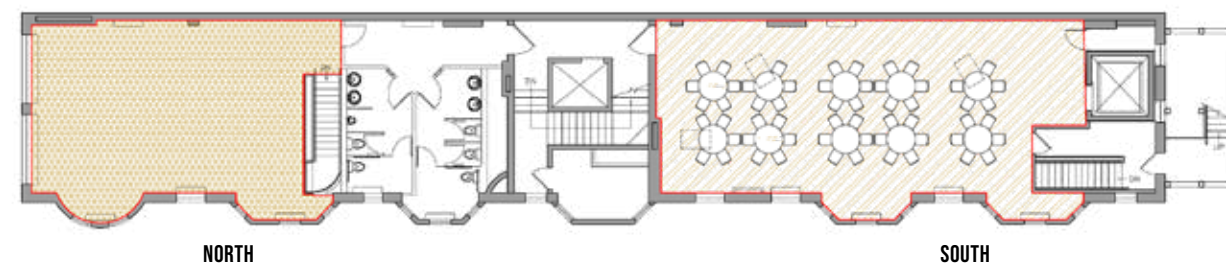
BASEMENT



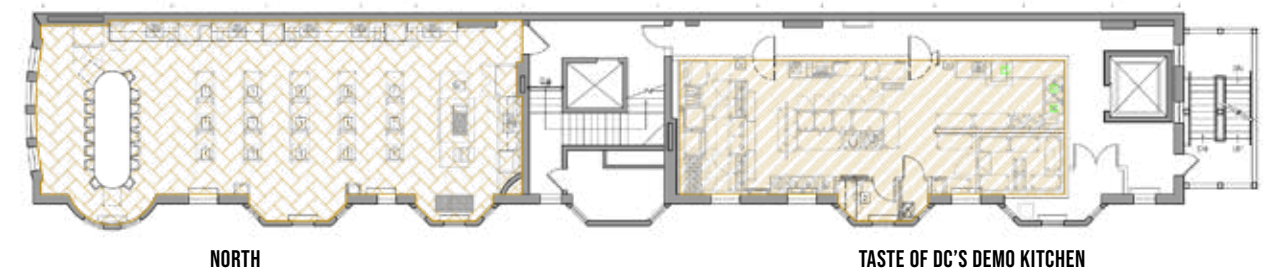
FIRST FLOOR



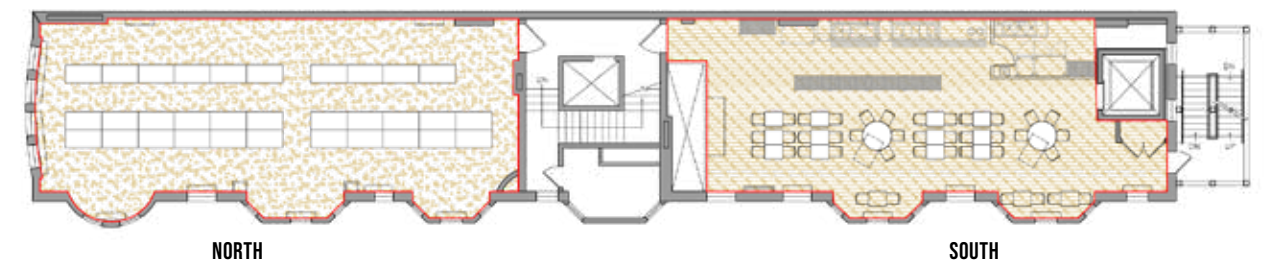
SECOND FLOOR



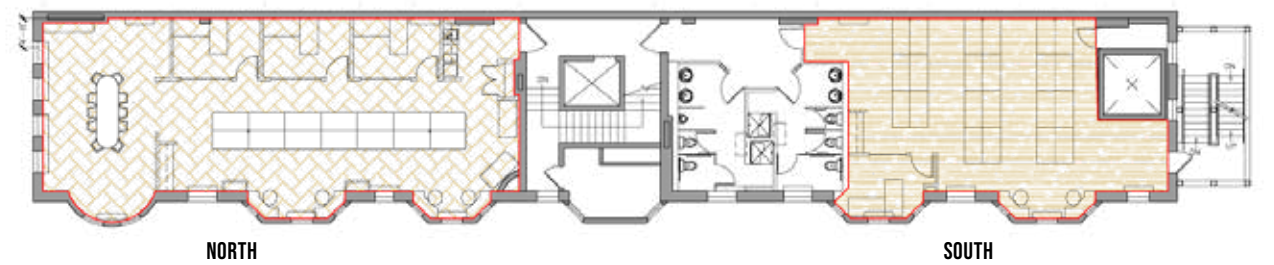
THIRD FLOOR



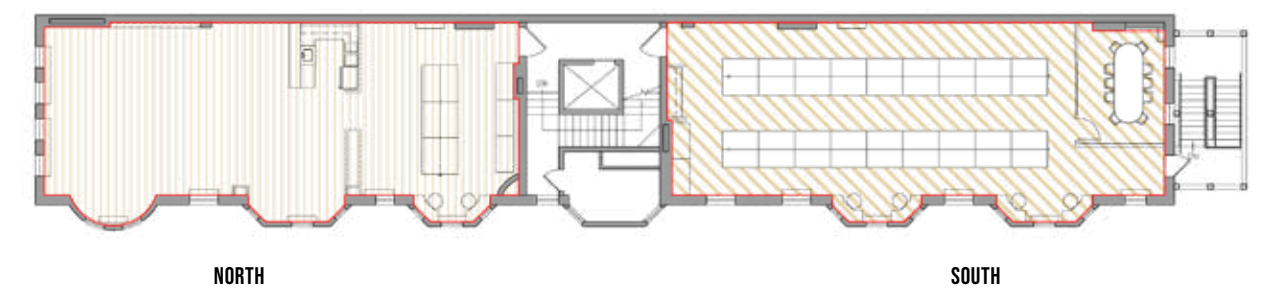
FOURTH FLOOR



FIFTH FLOOR



SIXTH FLOOR



FIRST FLOOR NORTH

510 SQ. FT.
50 GUESTS RECEPTION

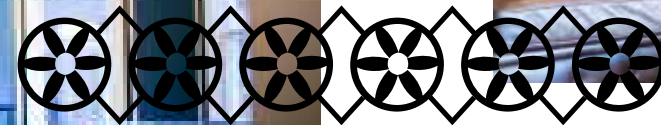
Intimate space with black tin roof ceiling, subdued lighting, brick walls and a cozy feeling perfect for a cocktail party or other reception style event. A perfect add on to the lounge above in second north for a two-level intimate event.



SECOND FLOOR NORTH

120 GUESTS (CONFERENCE OR COCKTAILS)
80 SEATED IN ROUNDS
50 CLASSROOM
766 SQ. FT.

With Arched Windows in the front of the room, tin ceilings and a carved mantle, this room is both expansive and intimate. There is easy access to restrooms on the way to the central elevator and can be combined with 2nd Floor South on the same floor for a more expansive event or 1st Floor North for a two-level intimate event.





TASTE OF DC'S DEMO KITCHEN

1282 SQ. FT.
50 GUESTS
LOCATED ON THIRD FLOOR NORTH

The perfect space for a variety of classes, particularly cooking classes. You can arrange for one of our talented Cooking Instructors to provide a class for family & friends, or as a Team Building event for your workplace. Beverage pairing packages are available for any class.



4 NORTH

150 GUESTS (CONFERENCE OR COCKTAILS)
120 SEATED IN ROUNDS
100 CLASSROOM
1260 SQ. FT.

A view of the neighborhood roofline dominates the view at the front of this space. Original light fixtures in window nooks and tin ceilings make for a fantastic space for parties. Equally useful for business presentations, this room features two ceiling-hung projectors and screens.

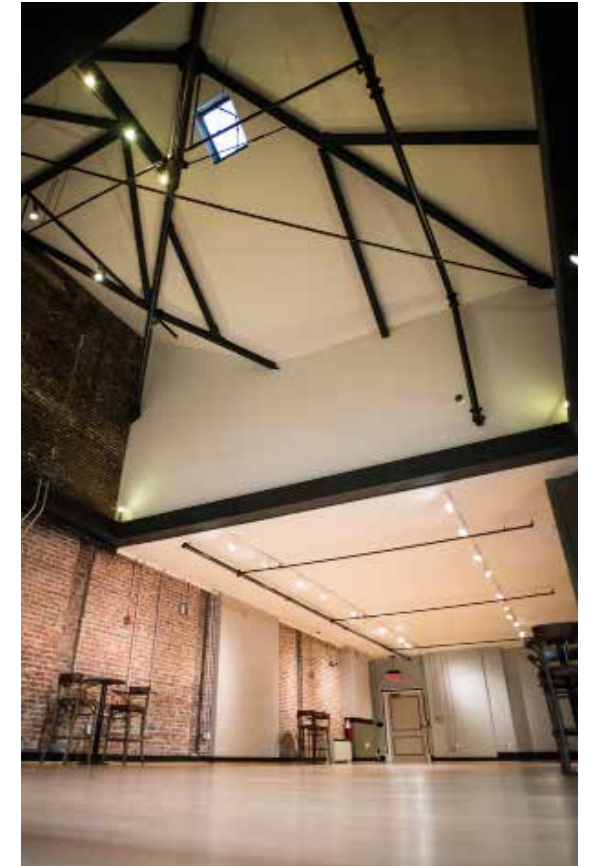




6 NORTH

150 GUESTS (CONFERENCE OR COCKTAILS)
120 SEATED IN ROUNDS
100 CLASSROOM
1093 SQ. FT.

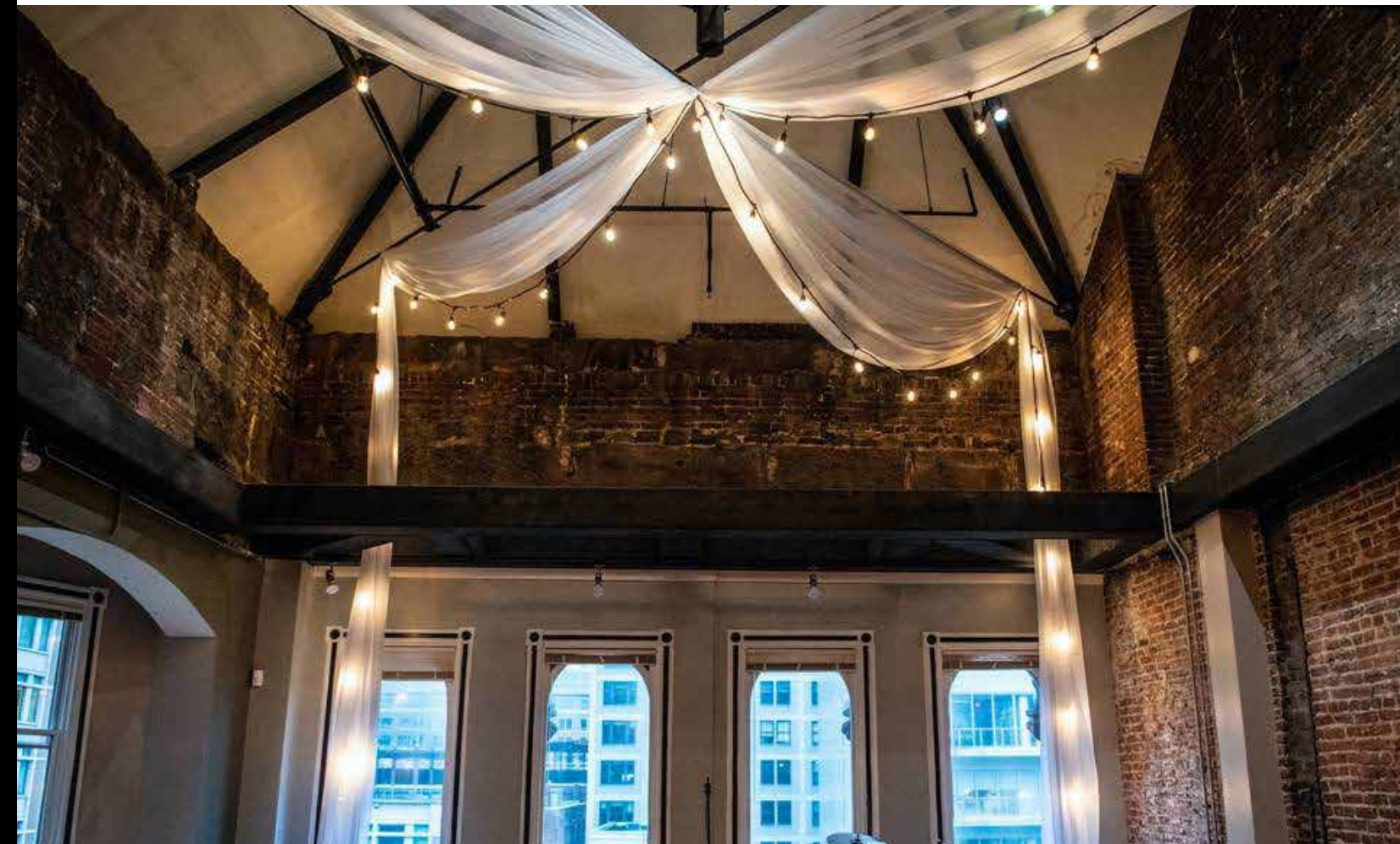
A stunning vaulted ceiling at the front of this large space provides guests with the experience of being in the roof of National Union Building. It contains some of the original timber used to hold up the spire & the hand-chiseled brownstone from Pennsylvania that make up the façade. Light wood floors and the height of the space provides lovely light during the day and elegance at night.



4 SOUTH

100 GUESTS (CONFERENCE OR COCKTAILS)
70 SEATED IN ROUNDS
50 CLASSROOM
1045 SQ. FT.

This space is fully functional for business meetings with one ceiling projector and screen, a butler's pantry for easy service for your event, and window nooks for more intimate seating areas for breakout conversations.





6 SOUTH

180 GUEST (CONFERENCE OR COCKTAILS)
150 SEATED IN ROUNDS
120 CLASSROOM
1266 SQ FT

Beautiful brick walls complete with two projectors and screens make this space great for anything from a conference to a reception style social event. With two window alcoves for flexible seating or mobile bars we can accommodate your group in historic style with elegant light wood flooring.



2 NORTH



4 NORTH



COCKTAIL CLUB

BASEMENT
40 GUESTS MAX | 585 SQ. FT.

An intimate 40 person space hidden below the rest of the building. It showcases a black granite bar, brick archways, a spiral staircase and classic touches. Feeling like a space right out of the prohibition era: Legend has it this space was first used during that time period as a secret place for downtown workers to escape from the dry streets above.

PREFERRED PARTNERS

CATERERS

Corcoran Caterers
Melanie Davis
melanie@corcorancaterers.com
O: (301) 588-9200 | M: (202) 359-3721
<http://corcorancaterers.com>

Occasions Caterers
Wyatt McKenzie
wmckenzie@occasionscaterers.com
O: (202) 454-7838 | M: (202) 321-5555
<http://www.occasionscaterers.com>

K Signature Caterers
<https://www.signaturecaterers.com>

Spilled Milk Catering
Amit Gulati
amit@spilledmilkcatering.com
O: (202) 525-6455 | M: (301) 237-3148
<http://www.spilledmilkcatering.com>

Susan Gage Caterers
Dan Rose
drose@susangage.com
O: (317) 725-8507 | M: (617) 256-8507
<http://susangage.com>

Timber Pizza Company/Call Your Mother
Chris Brady
chris@timberpizza.com
O: (571) 722-1257 | M: (716) 909-6737
<http://timberpizza.com>
<https://www.callyourmotherdeli.com>

Well Dunn Catering
Cameron Doucette
cdoucette@welldunn.com
O: (202) 543-7878 | M: (202) 543-7878
<http://www.welldunn.com>

K Windows Catering
Debbie Smith
debbie@catering.com
O: (703) 752-9409 | M: (703) 928-8599
<http://www.catering.com>

EVENT PLANNER

Corsair Creative
tracy@corsaircreative.com
O: (571) 895-5795
<http://corsaircreative.com>

K = KOSHER CATERER



PREFERRED PARTNERS

AUDIO/VISUAL

Atmosphere Lighting
O: (301) 585-2100
<https://atmospherelighting.com>

Dan Goldman
party@dangoldmanevents.com
O: (202) 215-3655
<https://dangoldmanevents.com>

Nomad Events
Matt Fisher
mfisher@nomadevents.com
O: (703) 354-2939
<https://nomadevents.com>

Pike Productions DC
Kathleen Kelley
kathleen@pikeproductionsdc.com
O: (301) 813-9500 | M: (202) 792-3713
<https://pikeproductionsdc.com/>

DECOR/FLORAL

Design Foundry Events
Anne Senatore
asenatore@avistaevents.com
M: (240) 462-3377
<https://www.foundrycrew.com>

Revolution Event Design and Production
Erin Cermak
cermake@gmail.com
M: (410) 365-5367
<https://eventrevolution.com>

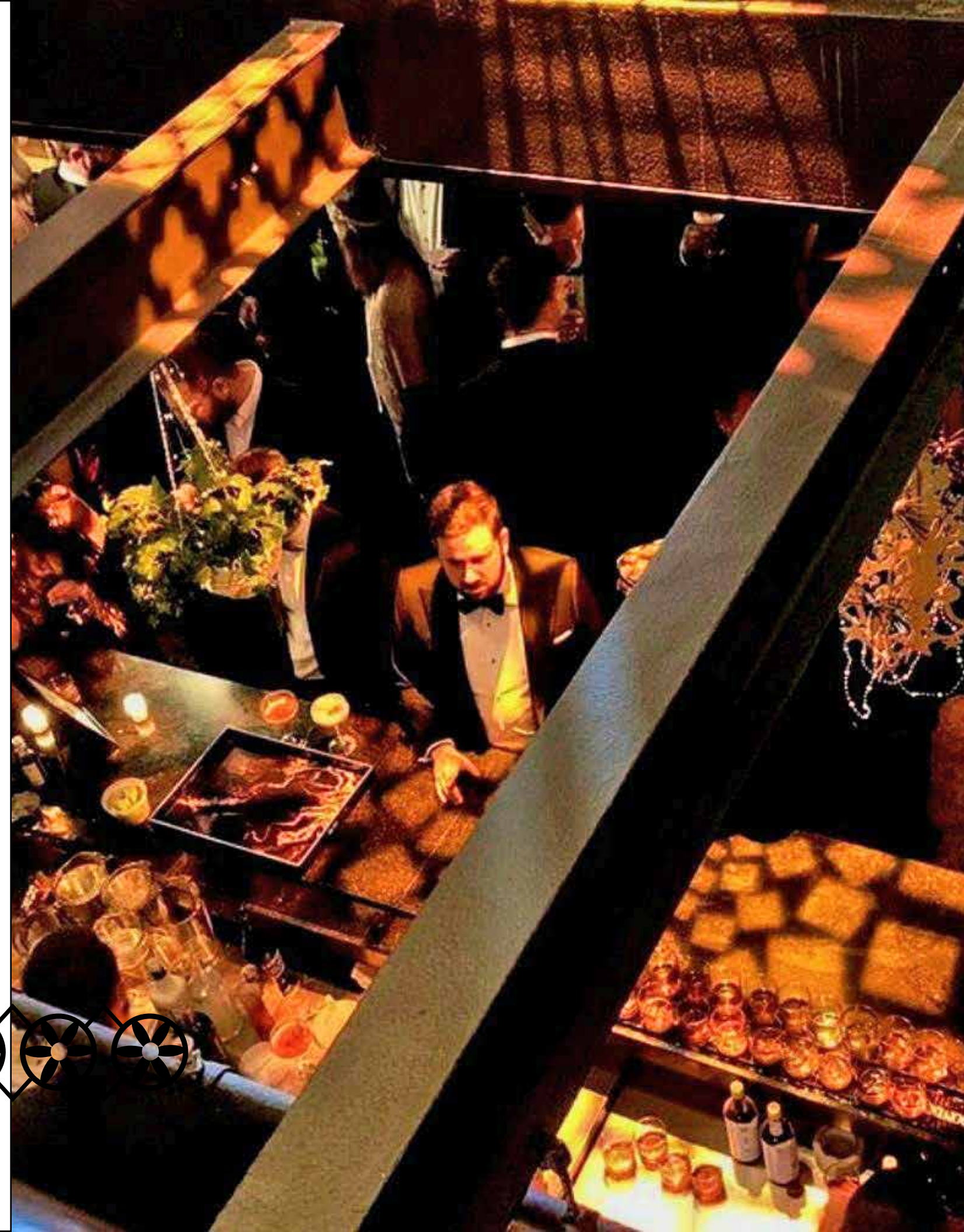
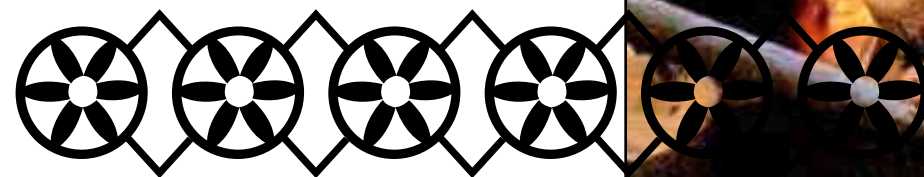
VALET

Atlantic Valet
Natnael Abraham
nabraham@asgpark.com
O: (202) 407-9555 | M: (202) 498-2152
<http://asgpark.com>

MJ Valet
Michael Jasser
mjasser@mjvalet.com
M: (202) 587-2745
<http://mjvalet.com>

INSURANCE

Reese Yeatman Insurance
Tom Riley
triley@reeseyeatman.com
(301) 657-9491



PARKING NEARBY

IN ORDER OF DISTANCE

975 F Street Garage - ParkChirp
975 F St NW, Washington, DC 20004
(202) 409-6618

509 9th Street Garage - ParkChirp
509 9th St NW, Washington, DC 20004
(202) 409-6618

Atlantic Parking
610 9th St NW, Washington, DC 20004
(202) 528-4221

SP+ Parking
962 McGill Aly, Washington, DC 20004
(202) 347-4338

555 12th St NW Garage
560 22th St NW, Washington, DC 20004
(202) 624-0840

LAZ Parking 1101 Pennsylvania Ave NW Garage
1101 Pennsylvania Ave NW, Washington, DC 20004
(443) 301-8272



Valet parking is available at our neighbor The Riggs Hotel. We can also contract Valet for you for your event at our location.

HOTELS NEARBY

IN ORDER OF DISTANCE

The Riggs Washington DC
900 F St NW, Washington, DC 20004
(202) 638-1800
\$\$\$

Kimpton Hotel Monaco Washington DC
700 F St NW, Washington, DC 20004
(202) 628-7177
\$\$\$

Hotel Harrington
436 11th St NW, Washington, DC 20004
(202) 628-8140
\$

Motto by Hilton Washington DC City Center
627 H St NW, Washington, DC 20001
(202) 847-4444
\$\$

Waldorf Astoria Washington DC
1100 Pennsylvania Ave, Washington, DC 20004
(202) 695-1100
\$\$\$\$

Eaton DC
1201 K St NW, Washington, DC 20005
(202) 289-7600
\$\$\$

Washington Marriot at Metro Center
775 12th St NW, Washington, DC 20005
(202) 737-2200

Our preferred Hotel partner, is The Riggs Hotel. It's located two doors away with an event room block package just for events at the National Union Building, ask your event coordinator for more information.

Grand Hyatt Washington
1000 H St NW, Washington, DC 20001
(202) 582-1234
\$\$\$

Hilton Garden Inn Washington DC Downtown
815 14th St NW, Washington, DC 20005
(202) 783-7800
\$\$

Sofitel Washington DC Lafayette Square
806 15th St NW, Washington, DC 20005
(202) 730-8800
\$\$\$

JW Marriott Washington DC
1331 Pennsylvania Ave NW
Washington, DC 20004
(202) 393-2000
\$\$\$

YOTEL Washington DC
415 New Jersey Ave NW
Washington, DC 20001
(202) 638-1616
\$\$

